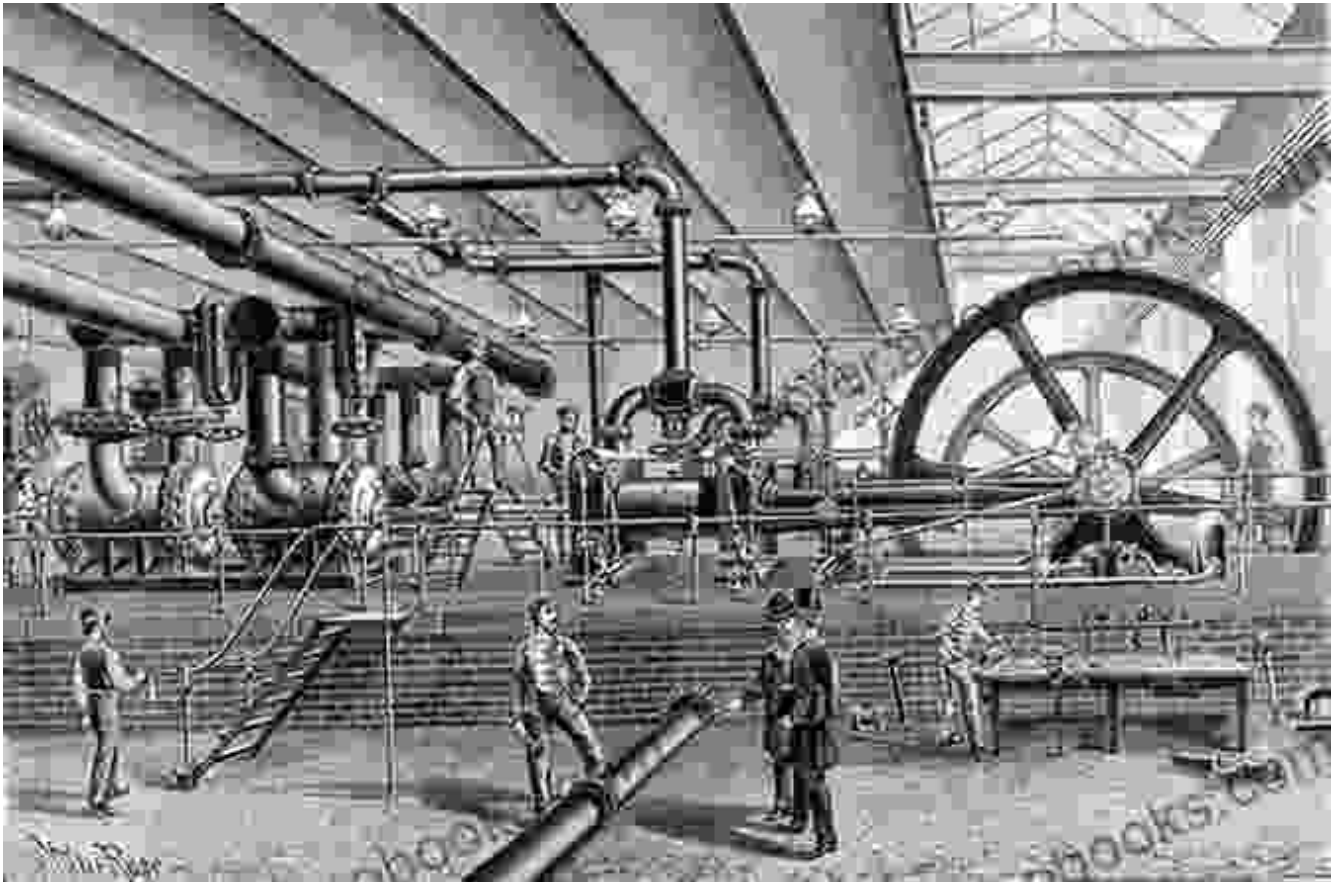
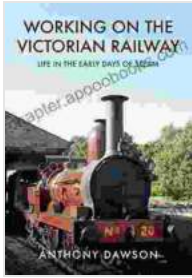


# Life in the Early Days of Steam: An Exploration of the Industrial Revolution's Impact on Daily Life



The Industrial Revolution was a period of rapid technological change that began in Great Britain in the mid-18th century. It marked a shift from hand production methods to machine-based manufacturing, and had a profound impact on society. One of the most important technological developments of this era was the steam engine, which played a major role in powering factories and transportation systems.

**Working on the Victorian Railway: Life in the Early Days of Steam** by Maggie Smith



★★★★★ 5 out of 5

Language : English  
File size : 2422 KB  
Text-to-Speech : Enabled  
Enhanced typesetting : Enabled  
Word Wise : Enabled  
Print length : 207 pages  
Screen Reader : Supported  
Paperback : 52 pages  
Item Weight : 6.7 ounces  
Dimensions : 8.5 x 0.13 x 11 inches

FREE

DOWNLOAD E-BOOK



## The Impact of Steam on Transportation

Before the invention of the steam engine, most goods were transported by land using horses or carts. This was a slow and expensive process, and it limited the distance over which goods could be transported. The steam engine made it possible to transport goods much more quickly and cheaply, and it also allowed for the development of new forms of transportation, such as the steam locomotive and the steamship.

The steam locomotive revolutionized land transportation. It allowed for the movement of heavy loads over long distances, and it made it possible to travel much faster than before. The steam locomotive also played a major role in the development of the railroad industry, which transformed the way people traveled and shipped goods.



## **The Impact of Steam on Industry**

The steam engine also had a major impact on industry. Before the steam engine, most factories were powered by water or wind. This limited the location of factories, and it also made production dependent on the weather. The steam engine made it possible to locate factories anywhere, and it also allowed for the production of goods on a much larger scale.

The steam engine played a key role in the development of the factory system. The factory system allowed for the mass production of goods, which made them more affordable for consumers. The factory system also led to a new division of labor, with workers specializing in different tasks. This made production more efficient and allowed for higher levels of output.





## **The Impact of Steam on Urbanization**

The Industrial Revolution led to a wave of urbanization, as people moved from rural areas to cities in search of work. The steam engine played a major role in this process, as it made it possible for factories to be located anywhere. This led to the development of industrial cities, which were often overcrowded and unsanitary.

Urbanization had a profound impact on society. It led to the development of new social and economic problems, such as poverty, crime, and disease. It also led to the development of new social and political movements, such as labor unions and political parties.



## **The Impact of Steam on Social Change**

The Industrial Revolution also led to a number of social changes. The factory system led to a new division of labor, with workers specializing in

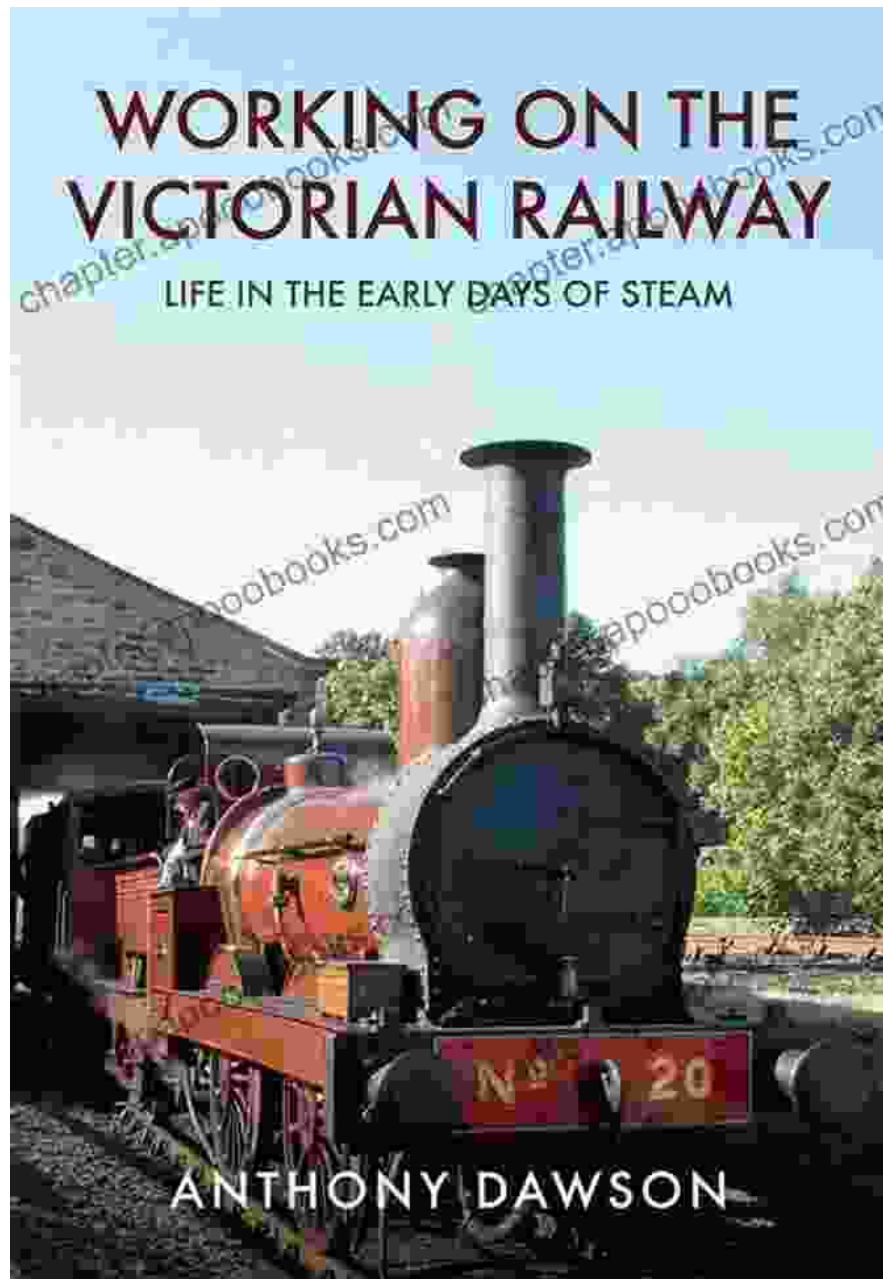
different tasks. This made work more repetitive and less skilled, and it led to a decline in the status of skilled workers.

The Industrial Revolution also led to a decline in the role of the family. In pre-industrial societies, the family was the primary unit of production. In industrial societies, the family was replaced by the factory as the primary unit of production. This led to a decline in the authority of parents and an increase in the independence of children.



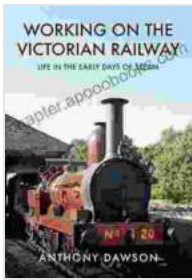
## **The Legacy of Steam**

The steam engine was a major technological development that had a profound impact on society. It revolutionized transportation, industry, and urbanization, and it led to a number of social changes. The steam engine is still used today, although it has been largely replaced by more efficient technologies, such as the internal combustion engine and the electric motor. However, the legacy of the steam engine lives on in the many ways that it shaped the modern world.



## **Life in the Early Days of Steam**

If you want to learn more about the impact of steam on society, I encourage you to read my book, "Life in the Early Days of Steam." This book provides a comprehensive overview of the Industrial Revolution, and it explores the many ways that steam technology changed the world.



## Working on the Victorian Railway: Life in the Early Days of Steam

by Maggie Smith

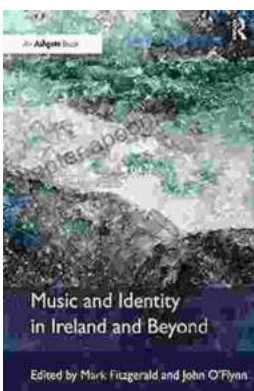
★★★★★ 5 out of 5

Language : English  
File size : 2422 KB  
Text-to-Speech : Enabled  
Enhanced typesetting : Enabled  
Word Wise : Enabled  
Print length : 207 pages  
Screen Reader : Supported  
Paperback : 52 pages  
Item Weight : 6.7 ounces  
Dimensions : 8.5 x 0.13 x 11 inches



## Terrorist Events Worldwide 2024: A Comprehensive Guide to Global Terrorism

Terrorism is a global threat that affects all corners of the world. In recent years, the number of terrorist attacks has increased dramatically, and the threat is only...



## Music and Identity in Ireland and Beyond: A Journey into the Heart of a Nation

Music: The Rhythm of Irish Identity In the tapestry of nations, music plays an intricate role in weaving the...



